

CLASSIFICATION OF RURAL/URBAN AREA USING FUZZY LOGIC

Vít PÁSZTO

Department of Geoinformatics, Faculty of Science, Palacký University in Olomouc,
Tř. Svobody 26, 771 46 Olomouc, Czech Republic





ON PROGRAM...

- Introduction to rural and urban area definition problem
- Fuzzy approach and visualization of the problem
- Overview of Czech Statistical Office's (hereafter as CZSO) registers and its visualization

RURAL OR URBAN

Rural & urban area delimitation problem

- Recent years – substantial change in population's movement (suburbanization)
- Villages → semi-urban areas/urban areas
- Not significantly stated

???

Which villages belong to urban area and which do not



RURAL vs. URBAN

- There is no uniform definition
- One and only widely accepted definition by OECD:
 - Population in area / population density (less than 150 pers./km²)
- For international comparisons
- All world countries have these data

???

Is this definition of rural area sufficient enough

RURAL vs. URBAN

In Czech Republic

- Program for rural development (for period 2007 – 2013)
- Two criteria for rural area:
 - Population (less than 2,000 inhabitants)
 - Population density (less than 150 pers./km²)
- New approach:
 - The CZSO's Departments of regional analyses and information services
 - 8 variations in definition of rural areas
 - Studied on municipalities (NUTS 5 or LAU 2)



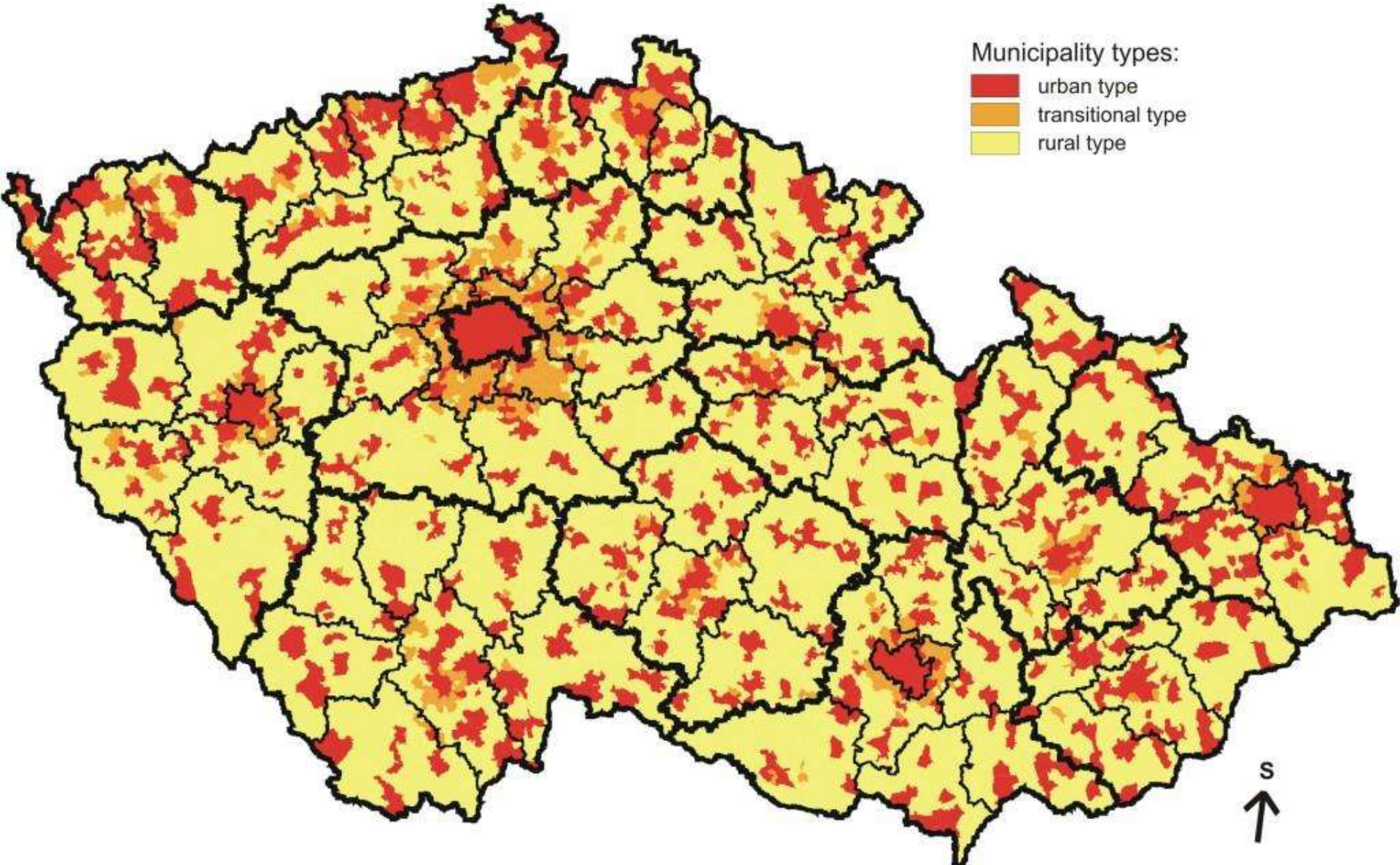


RURAL vs. URBAN

Variation 8:

- Weighted combination of several criteria
- Based on suburbanization trends
- Most comprehensive version (multi-criteria evaluation)
- Defined municipalities:
 - Urban type
 - Transitional type
 - Rural type

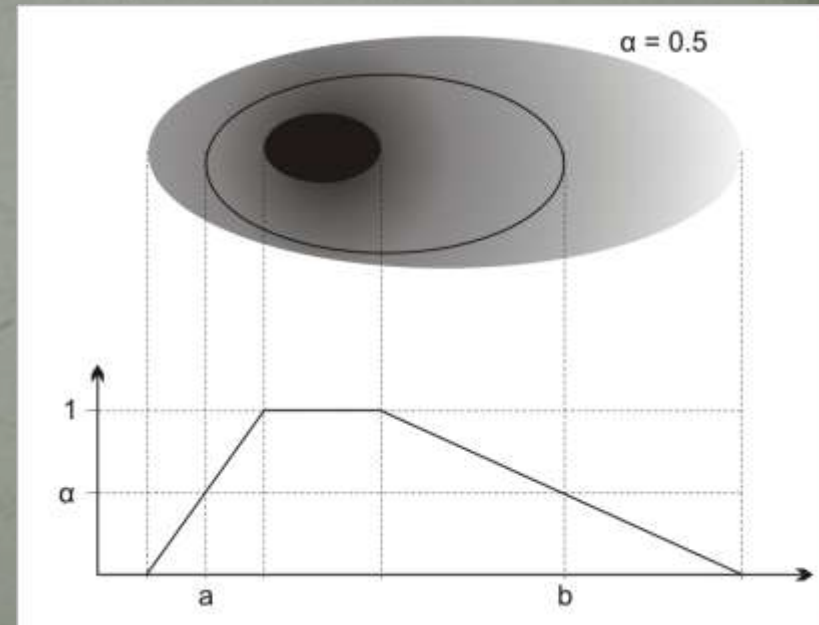
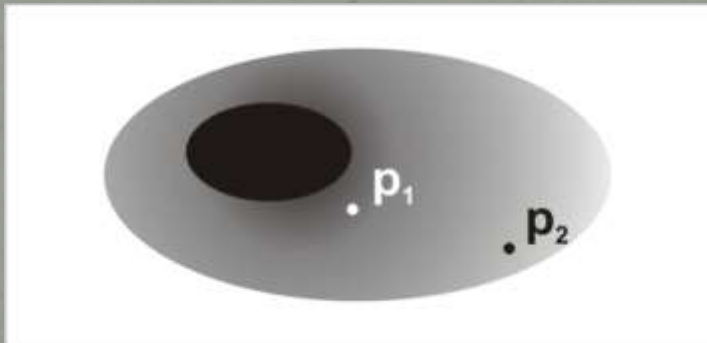
RURAL vs. URBAN



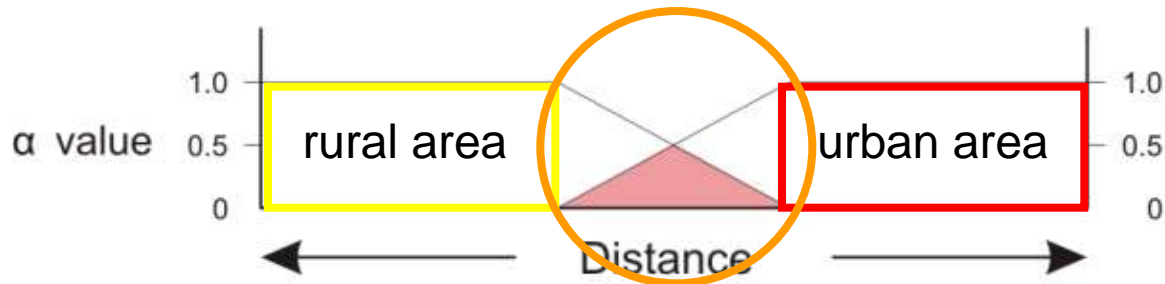
RURAL vs. URBAN

Fuzzy approach

- Solves abrupt transitions
- Provides smoother transitions
- Degree of membership instead of boolean yes/no state (or 1/0)



RURAL vs. URBAN



Population

Population density

- Variation 1

- Lower boundary is 2,000 inh. and upper is 5,000

- Variation 2

- Lower boundary is 1,500 inh. and upper is 5,000

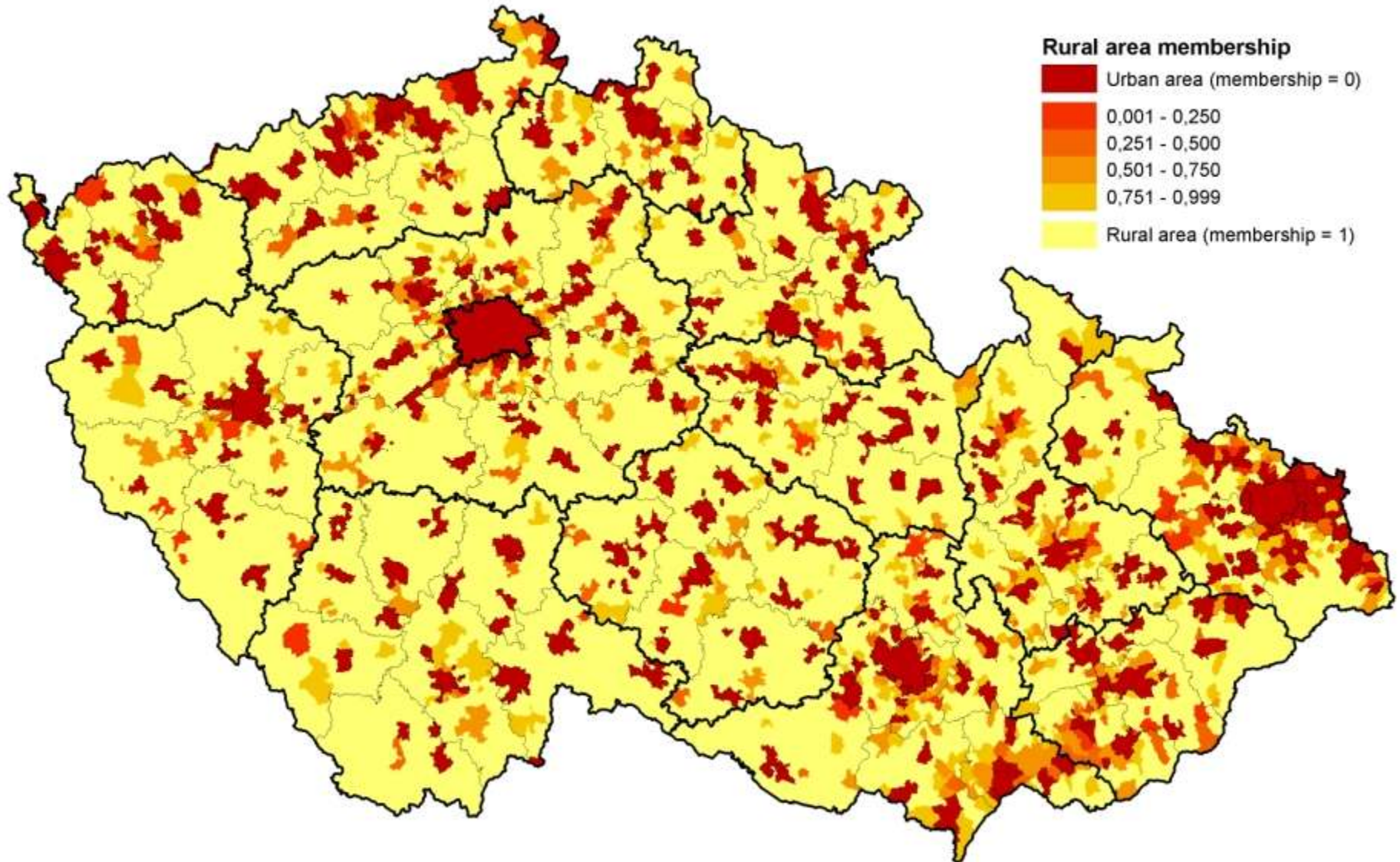
- Lower boundary is 100 persons per km²
- Upper boundary is 200 persons per km²

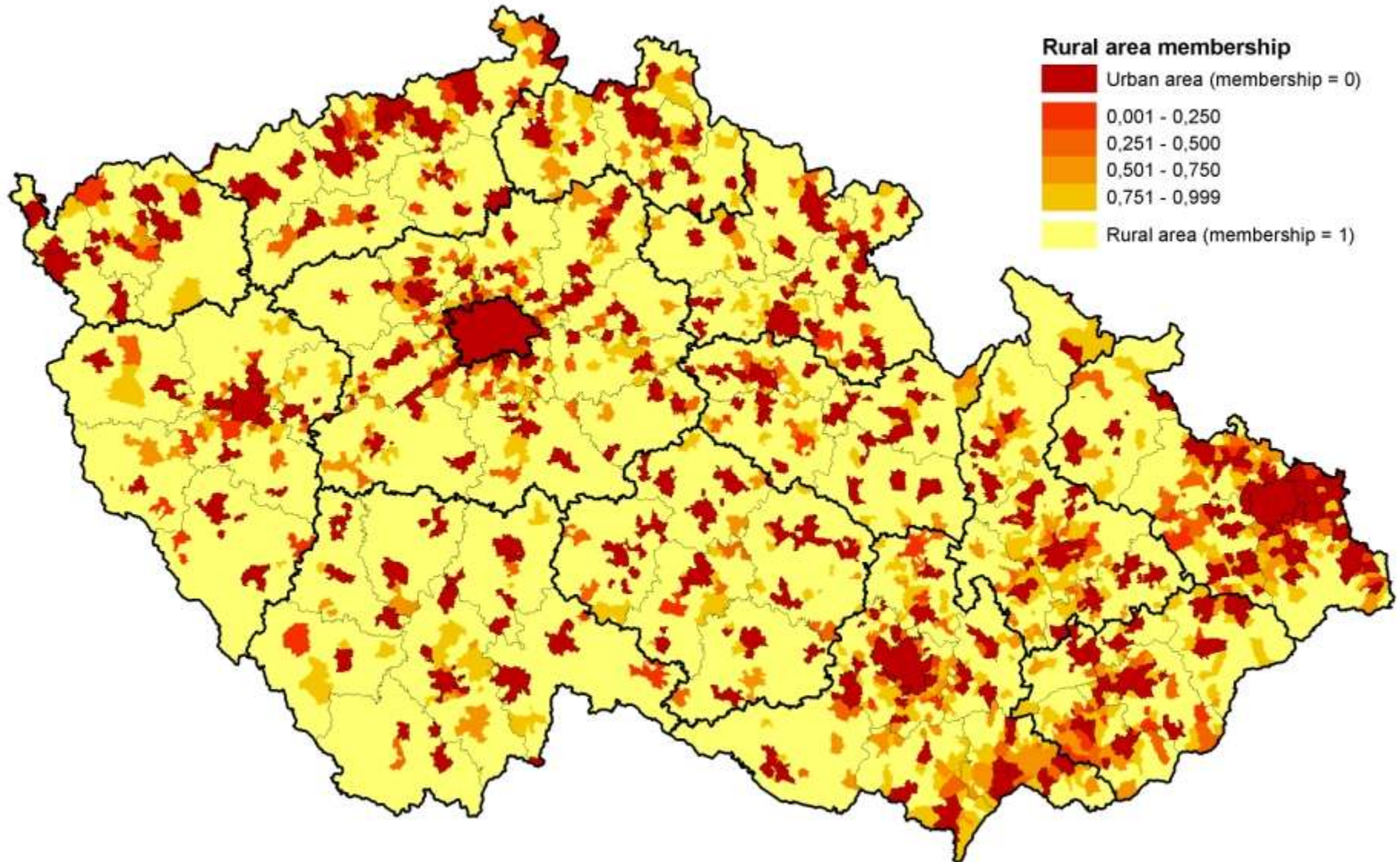
RURAL vs. URBAN

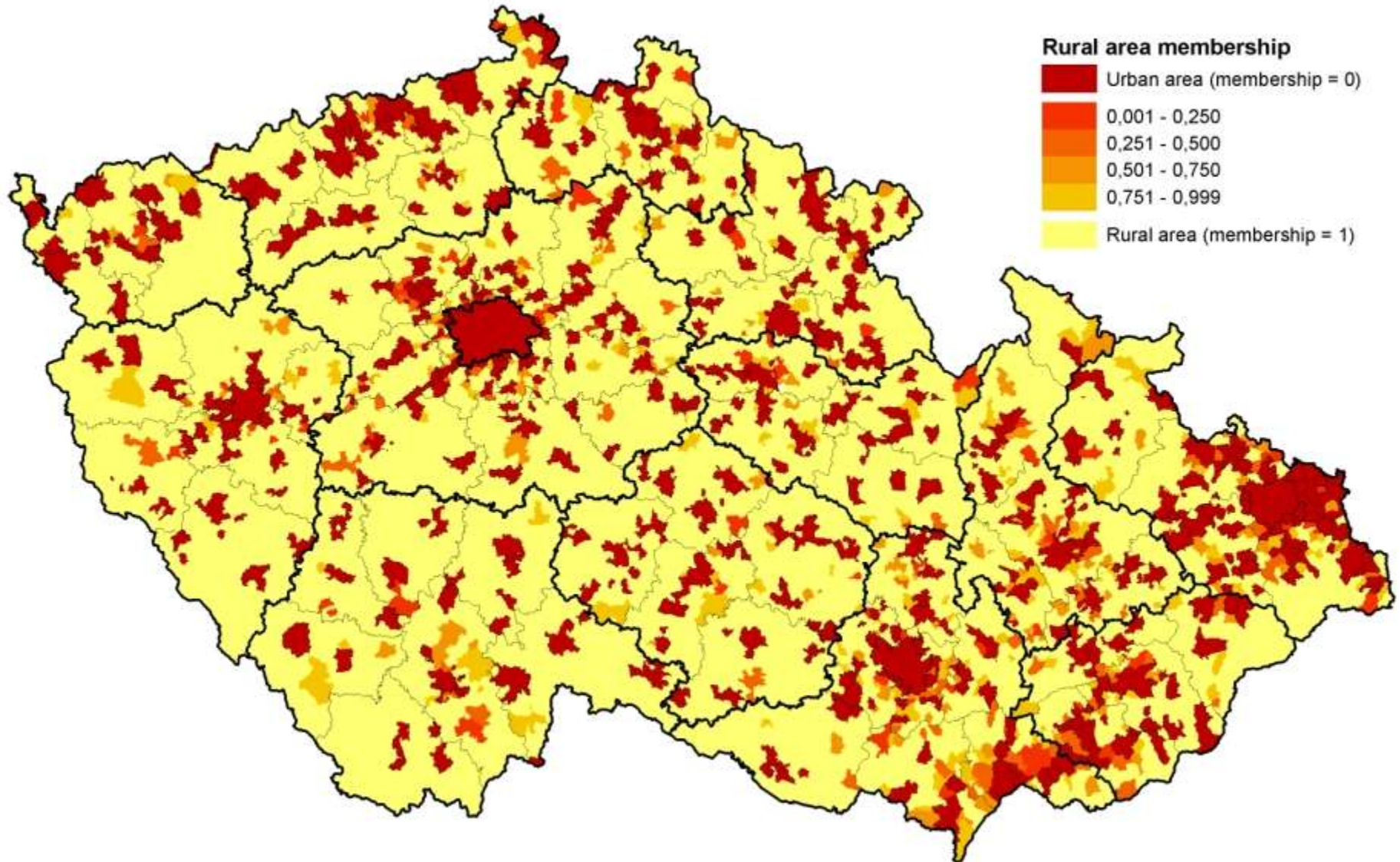
Visualization

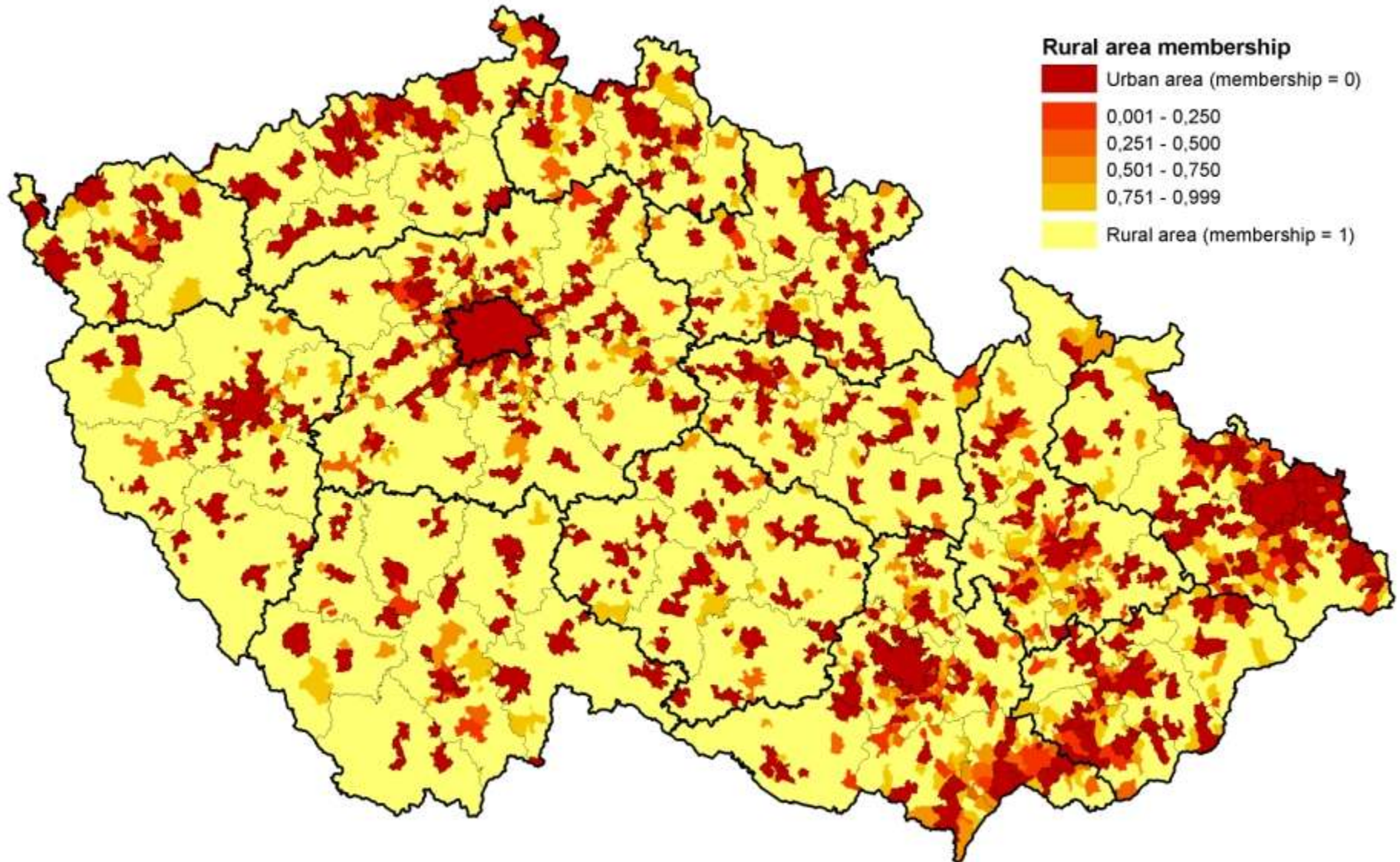
- 4 maps:
 - first group (average of fuzzy membership of indicators)
 - Variation 1 and population density
 - Variation 2 and population density
 - second group (Lukasiewicz t-norm fuzzy logic)
 - T-norm map 1
 - T-norm map 2
 - This approach is more strict (not that wide transitional zone)



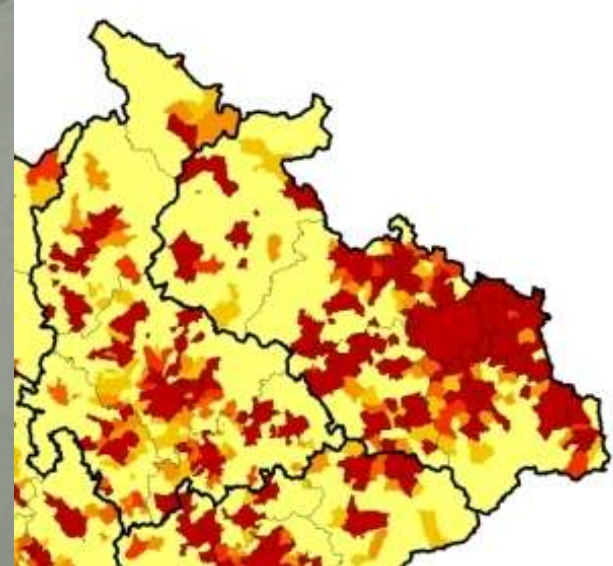
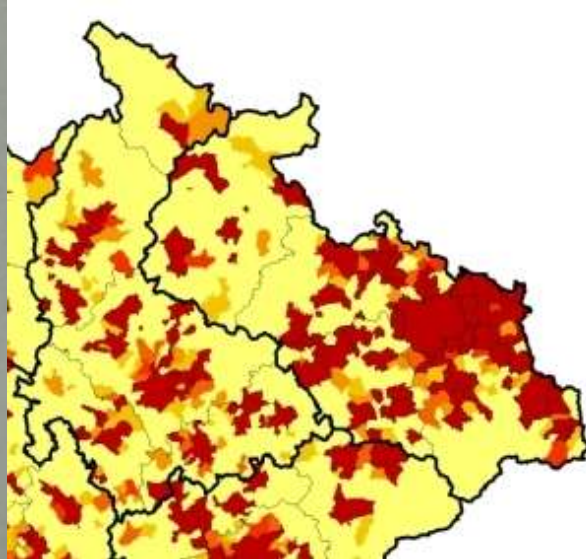
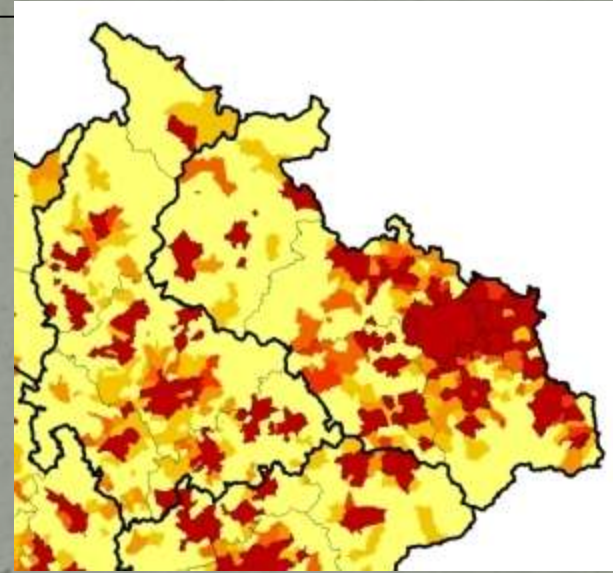
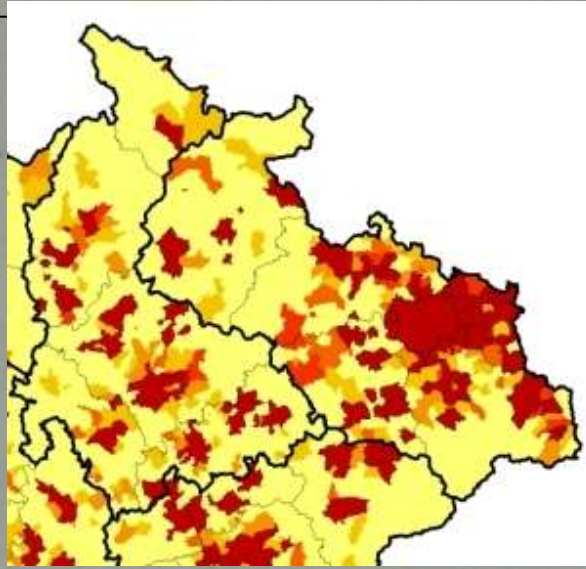








OSTRAVA SUBURB





CURRENT RESEARCH

- Five more indicators
 - Population on built area
 - Rate of flats in houses
 - Population/finished flat
 - Population change (1997-2006)
 - Distance from main regional city
- Problem – keeping recency of data
- Solution – National census of population, houses and flats 2011



**THANK YOU FOR YOUR
ATTENTION**

Vít PÁSZTO

vit.paszto@gmail.com

Department of Geoinformatics, Faculty of Science, Palacký University in
Olomouc, Tř. Svobody 26, 771 46 Olomouc, Czech Republic



CZSO's REGISTERS & VISUALIZATION

- Plenty of registers and databases:
 - Register of Economical subjects, Register of Enumeration Districts and Buildings, Register of Accommodation, Database of Foreign Trade, Municipal statistics
- ...and Population and Housing Census (2001)
- New national concept – 4 cardinal registers:
 - Register of Territorial Identification and Addresses (in Czech RÚIAN)
 - The Register of Citizens (in Czech ZRO)
 - The Economy register
 - Estate register (in Czech ZRN)

CZSO's REGISTERS & VISUALIZATION

- Most of them – spatial pattern

And their visualization???



- „just“ static maps (images)
- or clickable maps

???

What about modern technologies



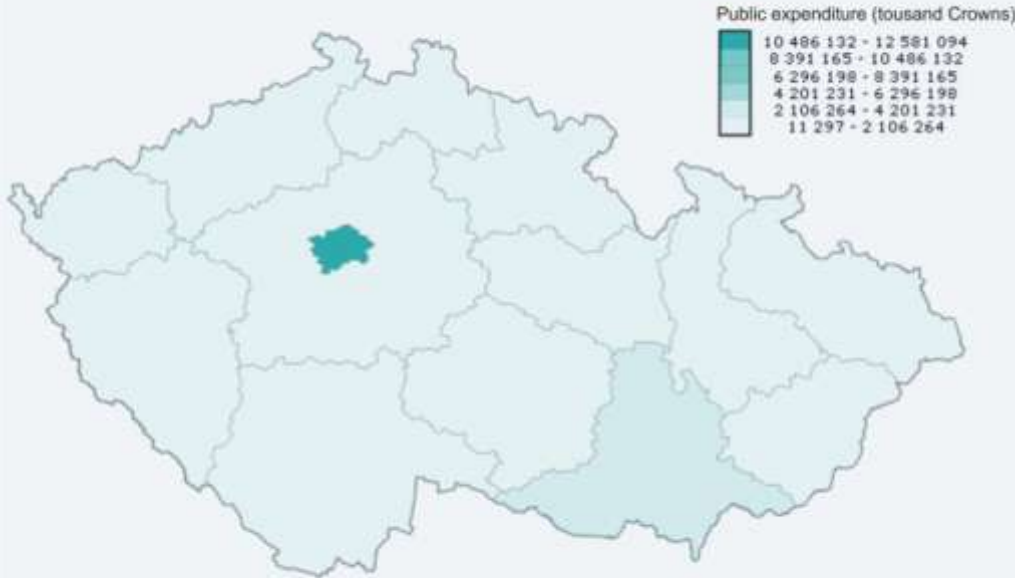
CZSO's REGISTERS & VISUALIZATION

Public database (PDB)

- One basic and uniform source
- Public presentation of mainly CZSO's data
- Downloadable free data
- Wide range of topics
- Simple visualization via maps
- Quick information tool

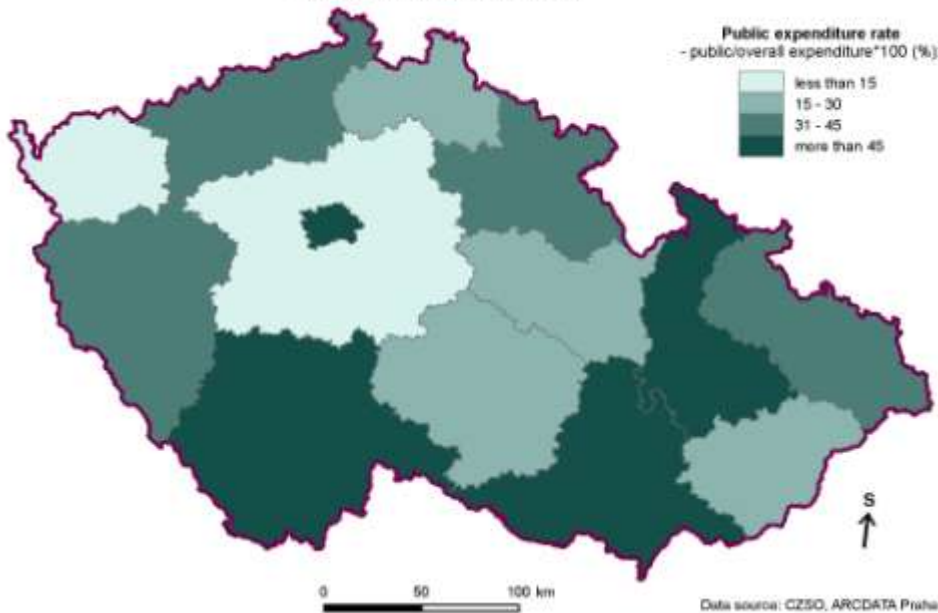


Public expenditure on research and development (2007)



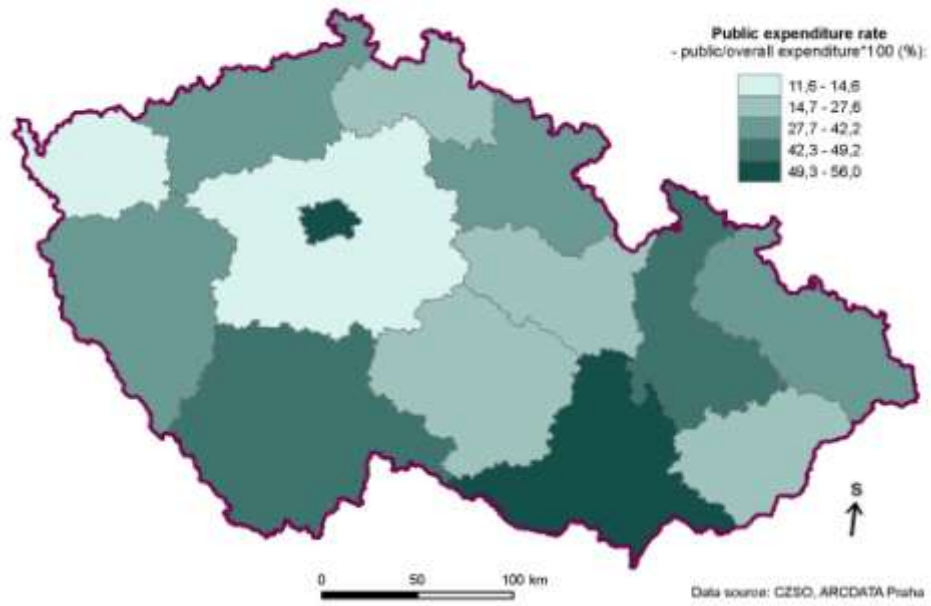
EXPENDITURE ON RESEARCH AND DEVELOPMENT IN CZECH REPUBLIC

Public expenditure rate in 2007



EXPENDITURE ON RESEARCH AND DEVELOPMENT IN CZECH REPUBLIC

Public expenditure rate in 2007





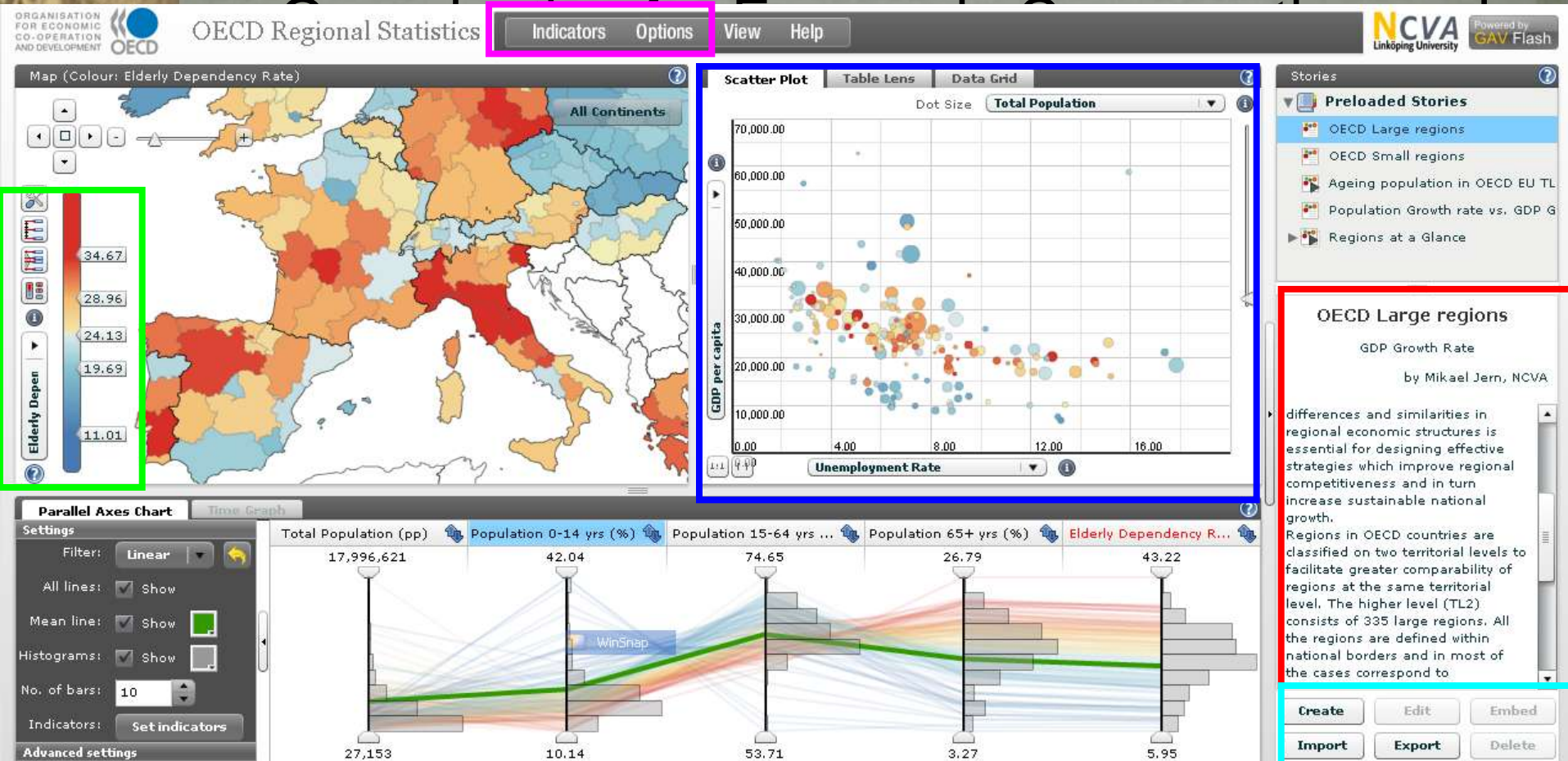
OECD VISUALIZATION

- Organisation for Economic Co-operation and Development

OECD eXplorer

- Web application
- Interactive maps for regional statistics
- Analytical tools
- Trends over time (time animations)
- 2D statistical graphs (e.g. scatter-plot)
- Export/import (.XML), upload own data
- And more...

OECD VISUALIZATION



– And more...



THANK YOU FOR YOUR 2nd ATTENTION

Vít PÁSZTO

vit.paszto@gmail.com

Department of Geoinformatics, Faculty of Science, Palacký University in
Olomouc, Tř. Svobody 26, 771 46 Olomouc, Czech Republic