



ICT for Land Consolidation Processes

GOMBAS Katalin - KATONA János - NYIRI Judit - PODÖR Andrea



MANSBERGER Reinfried – SEHER Walter

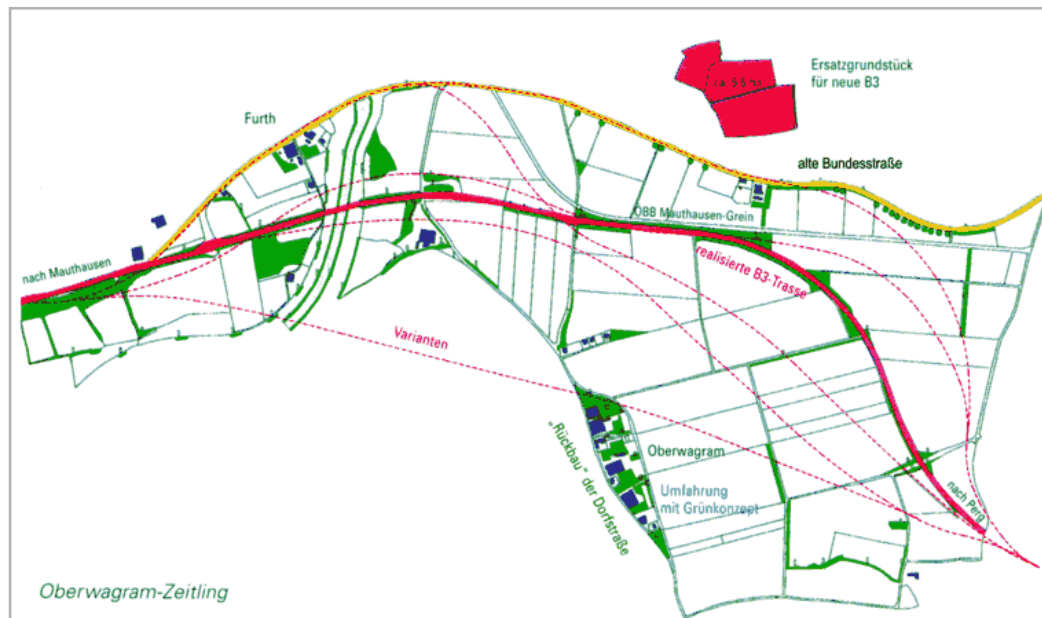


Aktion Österreich – Ungarn
Osztrák-Magyar Akció Alapítvány

Open GIS Conference, Székesfehérvár, 19.03.2009

Land Consolidation: Objectives

- Improvement of agricultural land use structures
- Implementation of land related public development strategies like traffic infrastructure, flood protection, nature conservation and housing development



Content

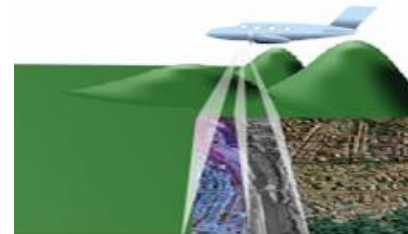


- Project Description
- Approach of Implementation: Methodology
- Selected Results:
 - Use of Geodata
 - Use of Modern Information & Communication Technology
 - Education
- Conclusions and Recommendations

Objective of Project

Investigation on the use and potential of

- existing geo-data,
- new instruments and methods of data acquisition,
- modern data processing technologies
- new communication technologies



for processes of land consolidation

Topics to be Investigated



- New Challenges for Land Consolidation Authorities (LCA)
- Availability and Use of Geodata at LCA
- Methods and Processes of ICT used at LCA
- Communication of Performances of LCA to the Public
- Education, Training and Continuous Personal Development for and at LCA

Approach of Implementation: Methodology



Input:

REALITY CHECK

ANALYSIS

Output:

FINAL REPORT
Recommendations

Methodology:

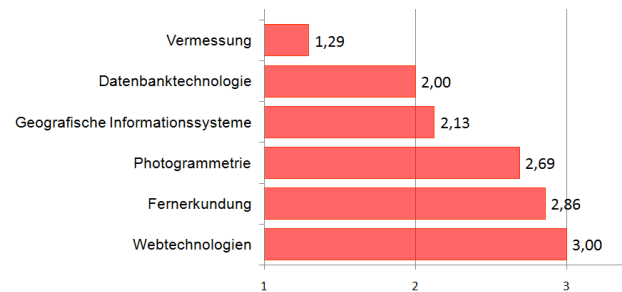
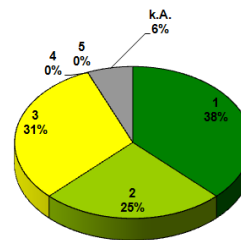
- Questionnaire
- Interviews
- On-site visits



Bewertung des AÖU (Original)		Kategorie		Anzahl		Prozent	
Frage	Antwort	1	2	3	4	5	6
1. Allgemeines							
1.1.1.1	1.1.1.1.1	1	1	1	1	1	1
1.1.1.2	1.1.1.2.1	1	1	1	1	1	1
1.1.1.3	1.1.1.3.1	1	1	1	1	1	1
1.1.1.4	1.1.1.4.1	1	1	1	1	1	1
1.1.1.5	1.1.1.5.1	1	1	1	1	1	1
1.1.1.6	1.1.1.6.1	1	1	1	1	1	1
1.1.1.7	1.1.1.7.1	1	1	1	1	1	1
1.1.1.8	1.1.1.8.1	1	1	1	1	1	1
1.1.1.9	1.1.1.9.1	1	1	1	1	1	1
1.1.1.10	1.1.1.10.1	1	1	1	1	1	1
1.1.1.11	1.1.1.11.1	1	1	1	1	1	1
1.1.1.12	1.1.1.12.1	1	1	1	1	1	1
1.1.1.13	1.1.1.13.1	1	1	1	1	1	1
1.1.1.14	1.1.1.14.1	1	1	1	1	1	1
1.1.1.15	1.1.1.15.1	1	1	1	1	1	1
1.1.1.16	1.1.1.16.1	1	1	1	1	1	1
1.1.1.17	1.1.1.17.1	1	1	1	1	1	1
1.1.1.18	1.1.1.18.1	1	1	1	1	1	1
1.1.1.19	1.1.1.19.1	1	1	1	1	1	1
1.1.1.20	1.1.1.20.1	1	1	1	1	1	1
1.1.1.21	1.1.1.21.1	1	1	1	1	1	1
1.1.1.22	1.1.1.22.1	1	1	1	1	1	1
1.1.1.23	1.1.1.23.1	1	1	1	1	1	1
1.1.1.24	1.1.1.24.1	1	1	1	1	1	1
1.1.1.25	1.1.1.25.1	1	1	1	1	1	1
1.1.1.26	1.1.1.26.1	1	1	1	1	1	1
1.1.1.27	1.1.1.27.1	1	1	1	1	1	1
1.1.1.28	1.1.1.28.1	1	1	1	1	1	1
1.1.1.29	1.1.1.29.1	1	1	1	1	1	1
1.1.1.30	1.1.1.30.1	1	1	1	1	1	1
1.1.1.31	1.1.1.31.1	1	1	1	1	1	1
1.1.1.32	1.1.1.32.1	1	1	1	1	1	1
1.1.1.33	1.1.1.33.1	1	1	1	1	1	1
1.1.1.34	1.1.1.34.1	1	1	1	1	1	1
1.1.1.35	1.1.1.35.1	1	1	1	1	1	1
1.1.1.36	1.1.1.36.1	1	1	1	1	1	1
1.1.1.37	1.1.1.37.1	1	1	1	1	1	1
1.1.1.38	1.1.1.38.1	1	1	1	1	1	1
1.1.1.39	1.1.1.39.1	1	1	1	1	1	1
1.1.1.40	1.1.1.40.1	1	1	1	1	1	1
1.1.1.41	1.1.1.41.1	1	1	1	1	1	1
1.1.1.42	1.1.1.42.1	1	1	1	1	1	1
1.1.1.43	1.1.1.43.1	1	1	1	1	1	1
1.1.1.44	1.1.1.44.1	1	1	1	1	1	1
1.1.1.45	1.1.1.45.1	1	1	1	1	1	1
1.1.1.46	1.1.1.46.1	1	1	1	1	1	1
1.1.1.47	1.1.1.47.1	1	1	1	1	1	1
1.1.1.48	1.1.1.48.1	1	1	1	1	1	1
1.1.1.49	1.1.1.49.1	1	1	1	1	1	1
1.1.1.50	1.1.1.50.1	1	1	1	1	1	1
1.1.1.51	1.1.1.51.1	1	1	1	1	1	1
1.1.1.52	1.1.1.52.1	1	1	1	1	1	1
1.1.1.53	1.1.1.53.1	1	1	1	1	1	1
1.1.1.54	1.1.1.54.1	1	1	1	1	1	1
1.1.1.55	1.1.1.55.1	1	1	1	1	1	1
1.1.1.56	1.1.1.56.1	1	1	1	1	1	1
1.1.1.57	1.1.1.57.1	1	1	1	1	1	1
1.1.1.58	1.1.1.58.1	1	1	1	1	1	1
1.1.1.59	1.1.1.59.1	1	1	1	1	1	1
1.1.1.60	1.1.1.60.1	1	1	1	1	1	1
1.1.1.61	1.1.1.61.1	1	1	1	1	1	1
1.1.1.62	1.1.1.62.1	1	1	1	1	1	1
1.1.1.63	1.1.1.63.1	1	1	1	1	1	1
1.1.1.64	1.1.1.64.1	1	1	1	1	1	1
1.1.1.65	1.1.1.65.1	1	1	1	1	1	1
1.1.1.66	1.1.1.66.1	1	1	1	1	1	1
1.1.1.67	1.1.1.67.1	1	1	1	1	1	1
1.1.1.68	1.1.1.68.1	1	1	1	1	1	1
1.1.1.69	1.1.1.69.1	1	1	1	1	1	1
1.1.1.70	1.1.1.70.1	1	1	1	1	1	1
1.1.1.71	1.1.1.71.1	1	1	1	1	1	1
1.1.1.72	1.1.1.72.1	1	1	1	1	1	1
1.1.1.73	1.1.1.73.1	1	1	1	1	1	1
1.1.1.74	1.1.1.74.1	1	1	1	1	1	1
1.1.1.75	1.1.1.75.1	1	1	1	1	1	1
1.1.1.76	1.1.1.76.1	1	1	1	1	1	1
1.1.1.77	1.1.1.77.1	1	1	1	1	1	1
1.1.1.78	1.1.1.78.1	1	1	1	1	1	1
1.1.1.79	1.1.1.79.1	1	1	1	1	1	1
1.1.1.80	1.1.1.80.1	1	1	1	1	1	1
1.1.1.81	1.1.1.81.1	1	1	1	1	1	1
1.1.1.82	1.1.1.82.1	1	1	1	1	1	1
1.1.1.83	1.1.1.83.1	1	1	1	1	1	1
1.1.1.84	1.1.1.84.1	1	1	1	1	1	1
1.1.1.85	1.1.1.85.1	1	1	1	1	1	1
1.1.1.86	1.1.1.86.1	1	1	1	1	1	1
1.1.1.87	1.1.1.87.1	1	1	1	1	1	1
1.1.1.88	1.1.1.88.1	1	1	1	1	1	1
1.1.1.89	1.1.1.89.1	1	1	1	1	1	1
1.1.1.90	1.1.1.90.1	1	1	1	1	1	1
1.1.1.91	1.1.1.91.1	1	1	1	1	1	1
1.1.1.92	1.1.1.92.1	1	1	1	1	1	1
1.1.1.93	1.1.1.93.1	1	1	1	1	1	1
1.1.1.94	1.1.1.94.1	1	1	1	1	1	1
1.1.1.95	1.1.1.95.1	1	1	1	1	1	1
1.1.1.96	1.1.1.96.1	1	1	1	1	1	1
1.1.1.97	1.1.1.97.1	1	1	1	1	1	1
1.1.1.98	1.1.1.98.1	1	1	1	1	1	1
1.1.1.99	1.1.1.99.1	1	1	1	1	1	1
1.1.1.100	1.1.1.100.1	1	1	1	1	1	1

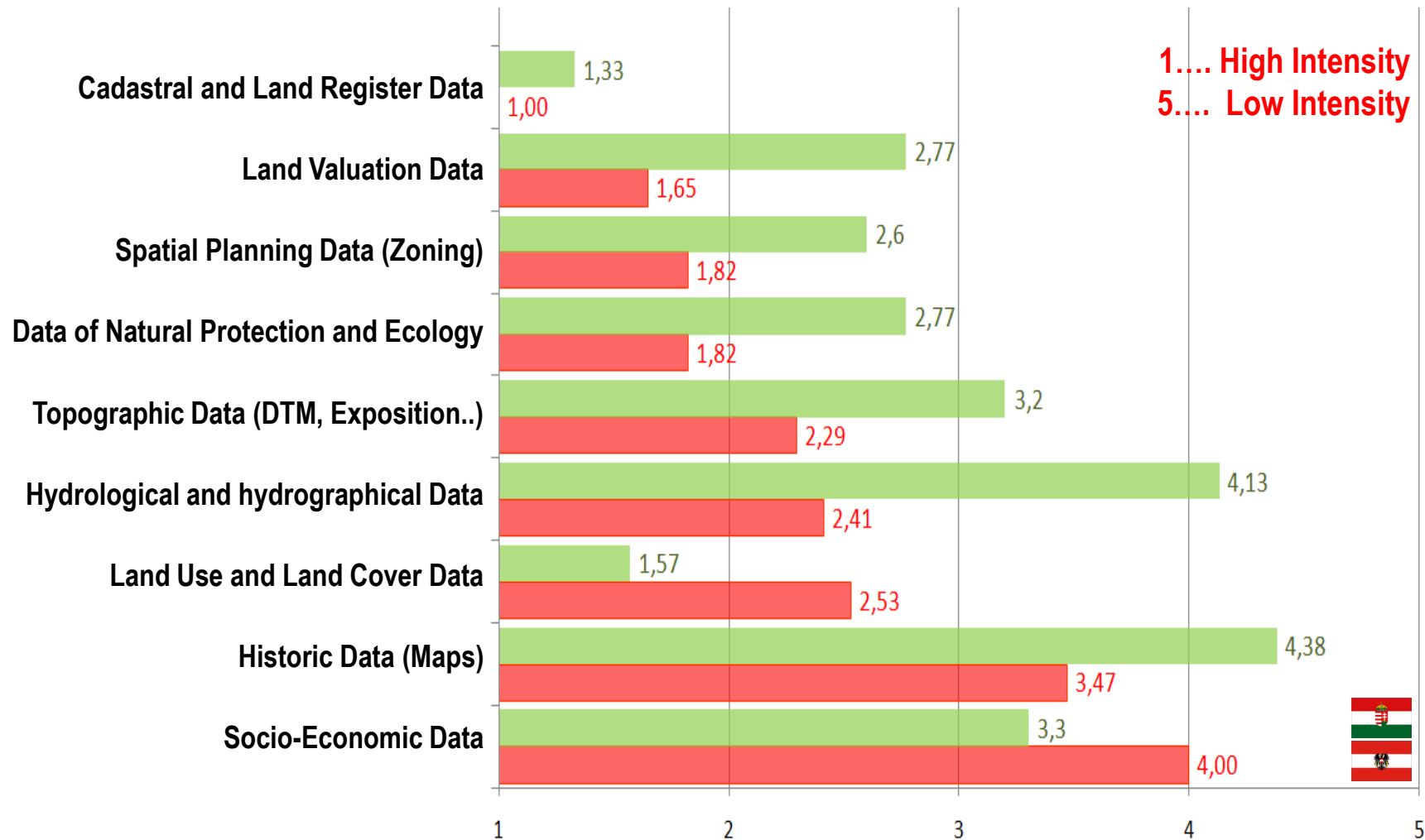
Methodology:

• Analysis of Input

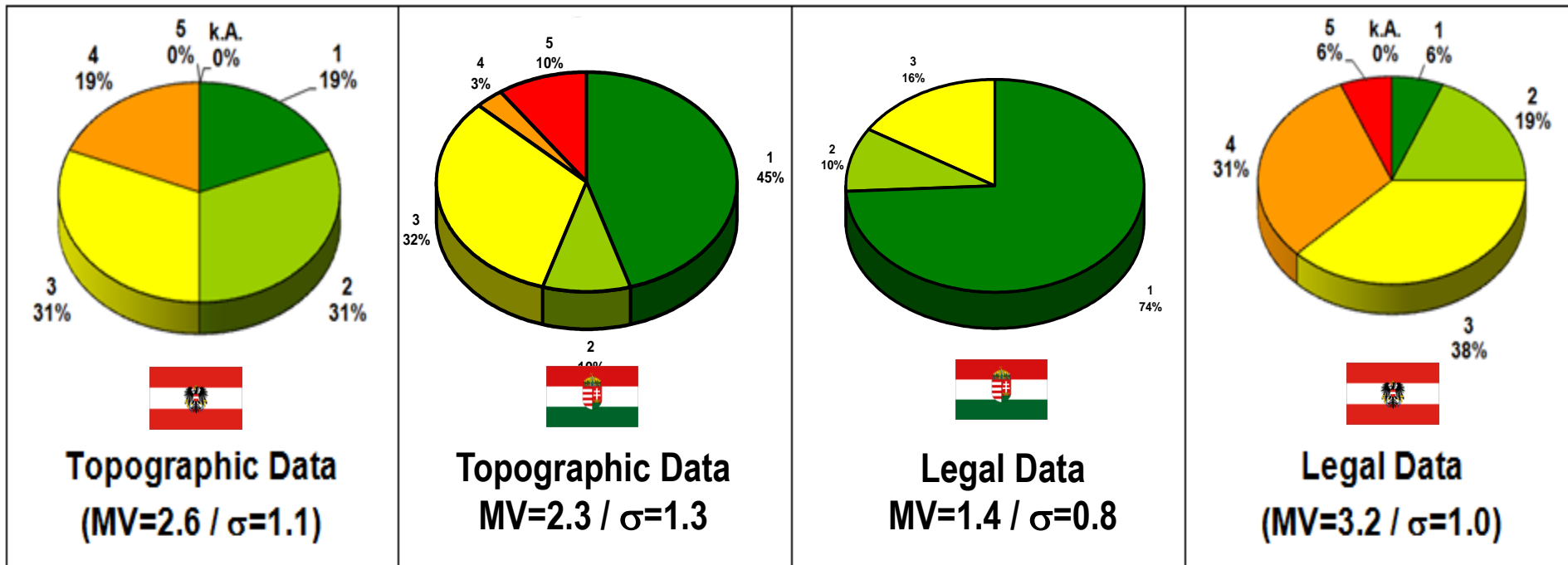


Use of Geodata:

Intensity of Use of Specific Geodata at LCA



Use of Geodata: Potential for Improvement of Data Quality

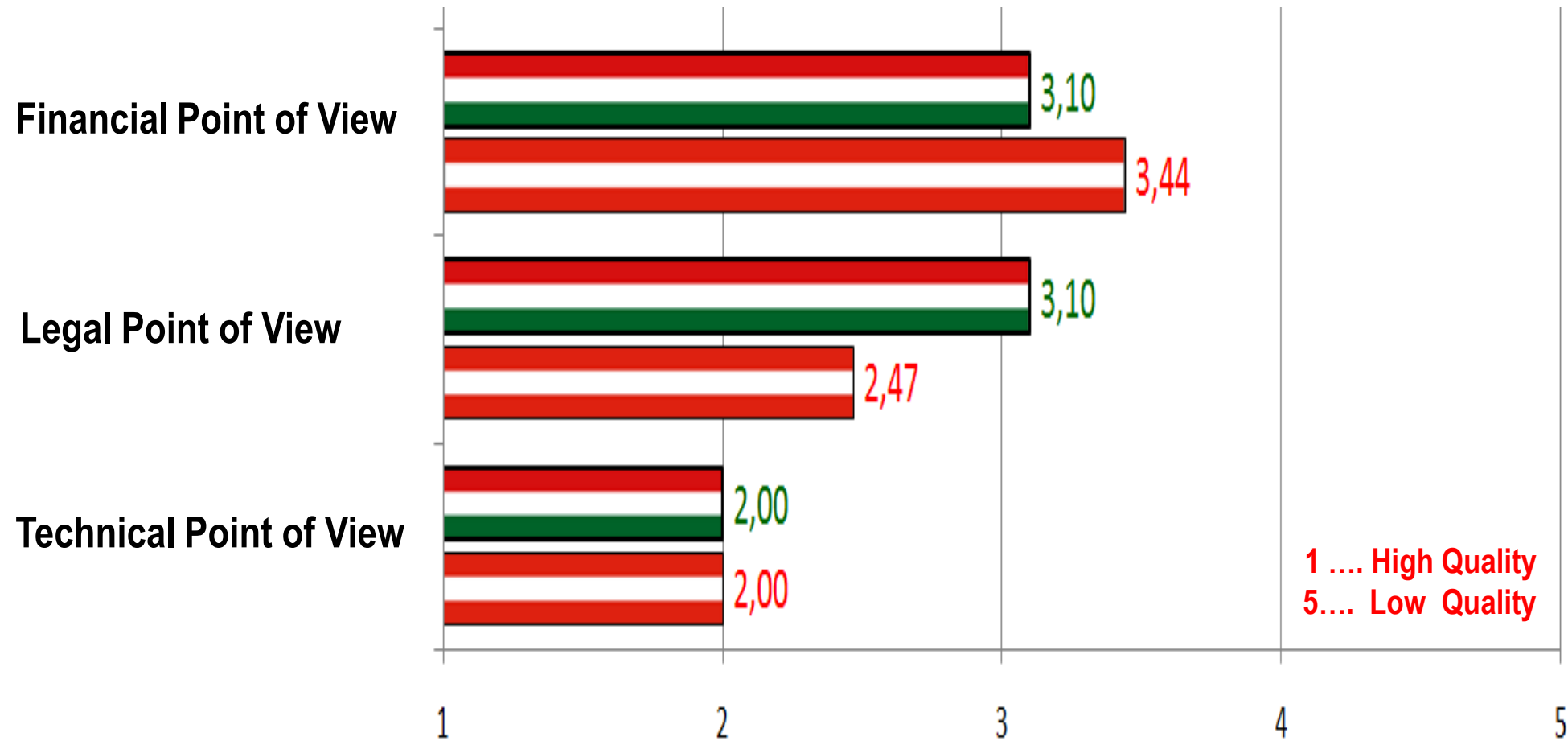


1 High Potential

5.... Low Potential

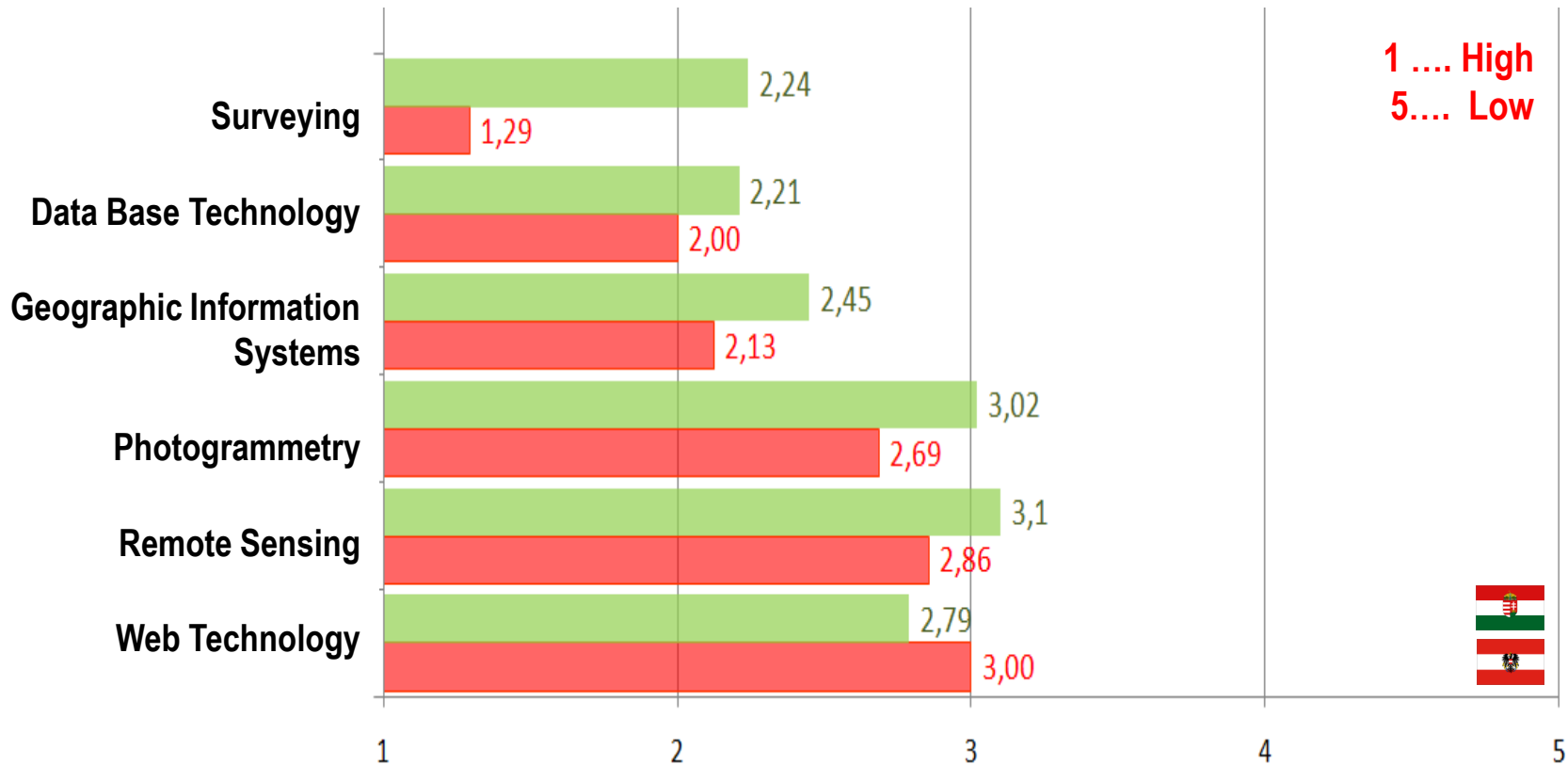
k.A. ... No Answer

Use of Geodata: Quality of Data Exchange with other Institutions



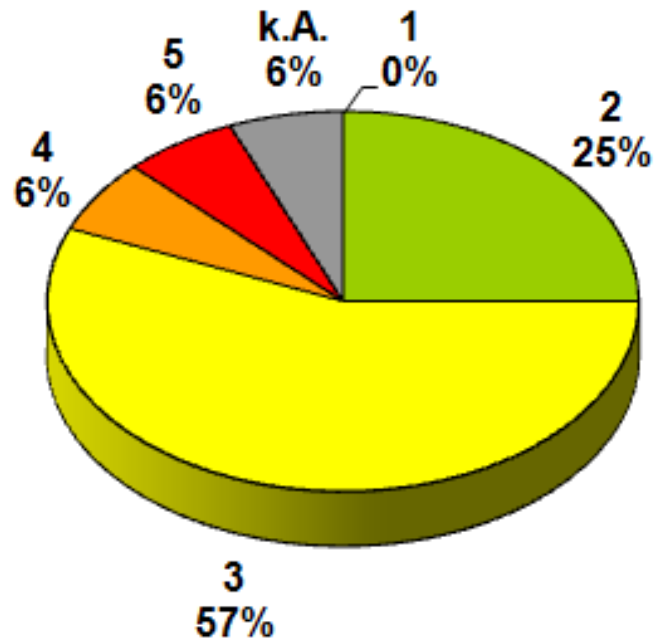
1 High Quality
5.... Low Quality

Technologies: Degree of ICT-Competence at LCA

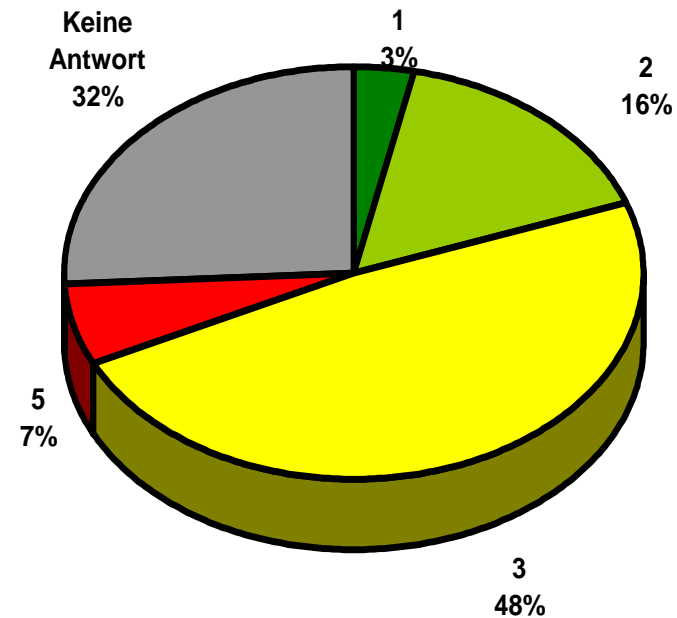


Education & Training

Academic Education meeting Requirements for LCA



(MW = 2.8 / σ = 0.8)



(MW = 2.9 / σ = 0.9)

1 High Satisfaction

5.... Low Satisfaction

k.A. ... No Answer

Conclusions and Recommendations



- Hungarian and Austrian land consolidation processes hardly can be compared - Austria: specific land consolidation law; one authority with all competences within an area of land consolidation
- Various geodata are required and used in an extended way for land consolidation processes
- The use of GIS – modelling techniques and modern communication technologies for LC processes is at the very beginning
- Data exchange between public institution is to improve (especially from a financial point of view)

Conclusions and Recommendations ... cont.



- Academic education and training as well as continuous professional development (CPD / LLL) have to be improved
- The success of land consolidation processes has to be communicated to the public
- Non-monetary value-added has to be considered for costing
- Hungary should follow the Austria model and implement a specific land consolidation law and a unique authority for performing land consolidation processes

What remains to be said



**THANK YOU
for Your Attention**

Questions ?

