

GIS Application in Tourism

Case study "Poarta Raiului" Area

Assistant Lecturer PhD. student eng. GEORGE EMANUEL VOICU

Assoc. Prof. PhD. LEVENTE DIMEN

Assoc. Prof. PhD. eng. IOAN IENCIU

Assistant Lecturer PhD. student eng. LUCIANA OPREA

Assistant Lecturer PhD. student eng. TUDOR BORSAN

Issues of Romanian Tourism

- tendency of increasing number of local consumers for tourism products ;
- progress in upgrading the tourism infrastructure which creates prerequisites for continued upward trend of tourist traffic ;
- travel agencies, owners of hotels, hostels and villas have made these changes to create a more welcoming environment for tourists ;

Geographical Location of Study Area

- the interested area is located in the south part of Alba county , near Sugag ;
- the access in the area is made on the following routes : Şugag - Tău - Gura Prigoanei- Luncile Prigoanei- Poarta Raiului or Cugir – Canciu - Luncile Prigoanei- Poarta Raiului ;



The Importance of Sebes Valley Area for Tourism

- rural tourism and agrotourism;
- tourism resorts and recreation ;
- climbing, caving;
- tourism for hunting and fishing;



The Legal Framework

- Law nr. 526/2003 approving the National Program of development on mountain tourism "SUPER-SCHI in Carpathian";
- Government Decision nr. 511/2001 regarding some measures of organization in recreational activities in tourist resorts ;
- Government Decision nr. 31/1996 for the approval of Methodology documentation of the territorial planning , resorts and technical documentation on constructions in tourism ;
- Government Decision nr. 1122/2002 related to the conditions and procedure for certification of resorts;

GIS Role in the Modernization of the Future Tourist Complex “Poarta Raiului”

- **correct data register by the achievement of digital maps tourist;**
- **introduction of these maps into digital atlases ;**
- **decision support of the management staff on issues related to mountain routes;**
- **statistical evidence on the inventory of land and buildings for tourism;**

Sources of the Data Integrated into GIS Environment

➤ plans and maps ;

➤ table files;

➤ measurements ;

➤ ortophoto-plans ;

➤ tourist guides;

➤ publications ;

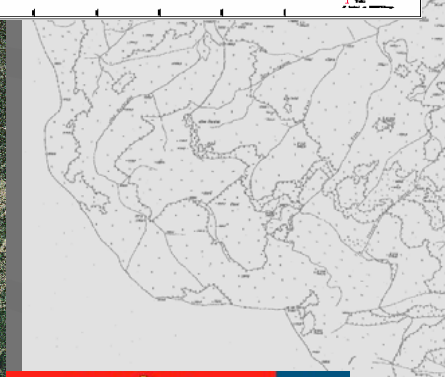
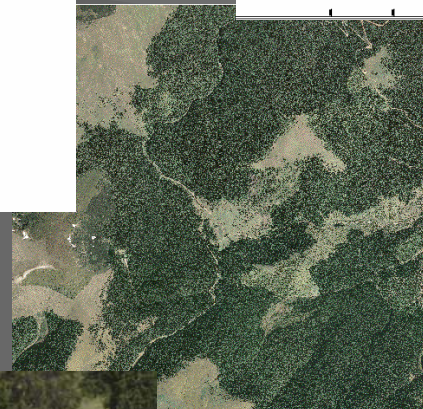
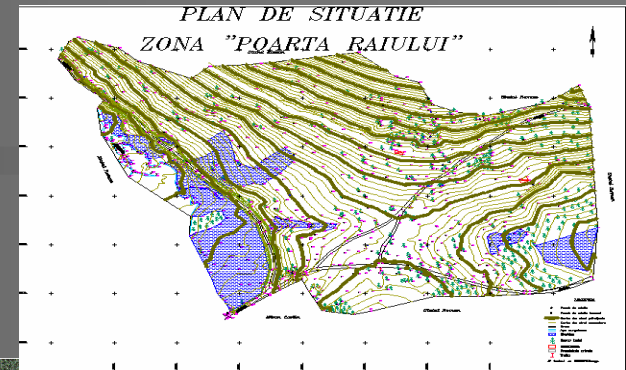
➤ internet ;

Coordinate inventory

Geodetic points			
Nr. Pkt.	X	Y	
Bliz. - 0.8301	510672.623	306631.889	
1	510674.036	306622.003	

New points			
Nr. Pkt.	X	Y	
2	510606.108	306662.070	
3	510606.670	306662.008	

Measured points			
Nr. Pkt.	X	Y	
103	510626.223	306660.430	
104	510624.406	306659.951	
105	510640.561	306631.222	
106	510649.268	306623.269	
107	510641.660	306625.381	
108	510631.050	306630.410	
109	510626.260	306618.263	
110	510613.717	306640.441	
111	510606.127	306642.260	
112	510611.761	306646.624	
113	510621.704	306650.263	
114	510610.293	306643.262	
115	510621.610	306648.772	
116	510623.880	306637.726	
117	510636.826	306633.260	
118	510631.266	306636.000	
119	510638.273	306640.760	
120	510626.276	306642.012	
121	510632.277	306642.040	
122	510640.246	306642.274	
123	510624.240	306643.010	
124	510618.190	306647.263	
130	510621.260	306639.040	
131	510623.260	306645.011	
132	510606.172	306672.264	
133	510604.146	306676.011	
134	510604.217	306672.010	
135	510603.171	306664.000	
136	510603.200	306662.003	
137	510606.768	306663.140	
138	510606.217	306671.000	
139	510601.220	306670.044	
140	510603.139	306674.003	
150	510612.670	306661.404	
151	510617.274	306659.074	
152	510606.263	306654.221	
600	510611.462	306651.306	
801	510606.238	306670.412	
801	510603.462	306671.267	
800	510610.162	306663.230	



ROMÂNIA
Între Tradiție și Actualitate
Ghid Turistic

2008

Include:

obiective turistice
descriere p. scurt
coordon.

index obiective
turistice

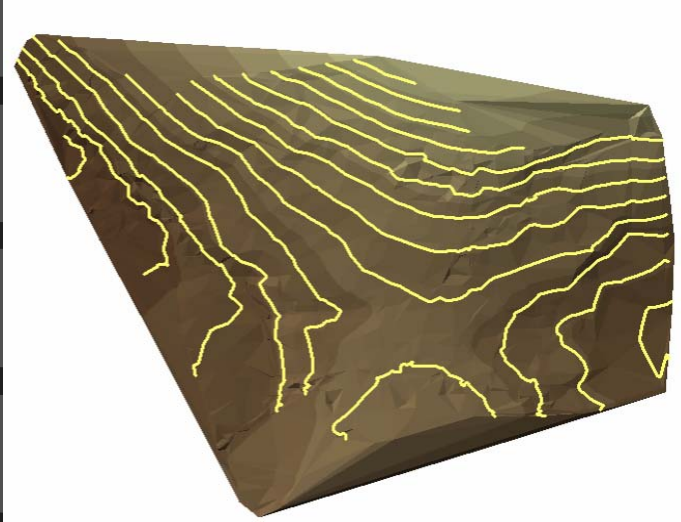
harta României cu
localizarea obiecti-
vilor turistice.

www.minimtur.ro

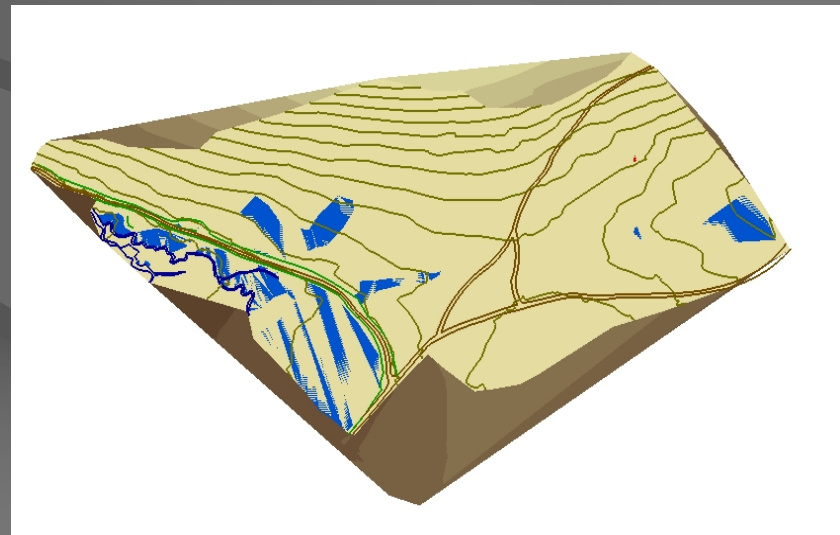
Integration of Graphical and Non Graphical Data into GIS Project

- selection of layers regarding the content of the maps;
- design database;
- design and adding descriptive elements;
- achievement links;

Development of Digital Models



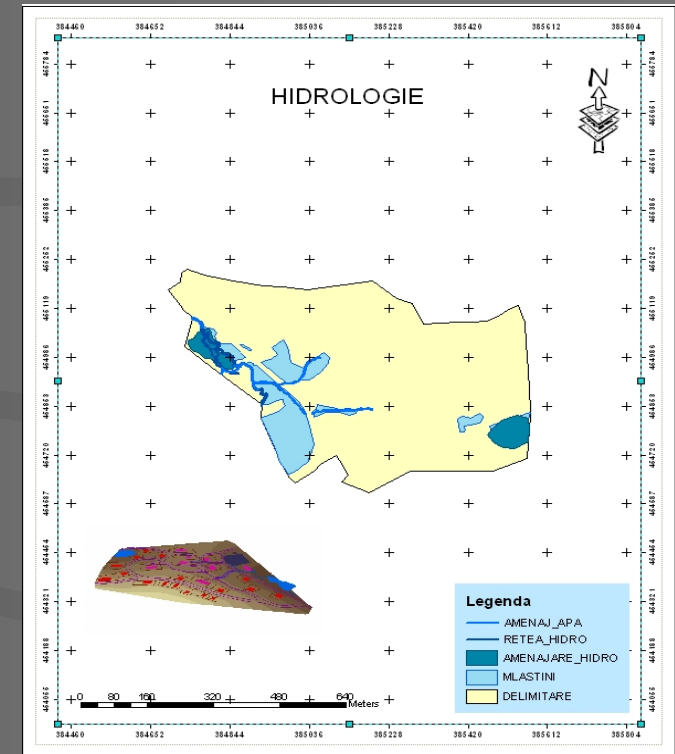
➤ 2D model



➤ 3D model

Establish Thematic Maps

- displaying cartographical representations ;
- highlighting the characteristics of lands ;
- providing informations regarding the entities modeled;
- selecting or highlighting entities after various criteria;



Conclusions and Proposals

- using GPS equipment for the purpose of collecting GIS data ;
- capability of GIS to access / integrate graphical alpha-numeric existing data ;
- making GIS information available for several departments through local networks/intranet or internet;
- development of digital maps for all tourist areas in Romania and placing them in an international online atlas for e-marketing activities;

Thank You for Your Attention!